

Year One Newsletter



Autumn 1 Term 2023-2024

We hope you all enjoyed your summer holidays and spent time relaxing with family and friends. We are excited about being back in school and looking forward to our first half term.

Curriculum

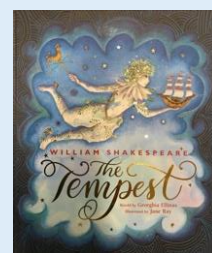
At Wingfield, we will be following the Compass Curriculum this academic year. Here are some of the subjects we will cover this half term:

Our first topic is based on Toys. We will be looking at different toys throughout **history**, exploring what we mean by "old" and "new" and see how toys have changed over time. In **Science**, we will be looking at everyday materials and their properties. We will also be looking at materials in **D.T.** and thinking about how we can upcycle materials that cannot be recycled. In **R.E.** we will be looking at belonging to different groups, including religious groups.



Whole School Project: The Tempest

We begin this term with a whole school project focusing on The Tempest. The children will be reading the story and using the text to write a setting description and a diary entry. Look out for displays of their published learning outside the Year 1 classrooms.



Physical Education

On PE days, pupils will be expected to attend school dressed in their P.E. kit for the whole day – normal school uniform is not required on these days. As such, children should not need to keep their P.E. kit in school during the week.

The school P.E. kit consists of:

- white top
- black jogging trousers or shorts
- school jumper or black sweatshirt (no hoods)
- sensible running trainers/plimsoles

PE Days

1DW Monday

1HP Tuesday

1HB Wednesday

Home Learning

Children will continue to be set home learning via their Showbie accounts every Friday. It will be expected that children will complete this learning within a week.

Please continue to read with your child each day and record what they have read in their Home Learning Journal.



Uniform

Please **label all items** of clothing clearly with your child's name to enable us to return lost property to the correct individual. Please remember earrings are **not permitted** at school. Children wearing earrings to school will be asked to remove them. Children should also come to school wearing a warm and waterproof coat.

Value of the Month

This term, we will explore the value of **Responsibility** in assemblies, PSHE lessons and during circle times.



The children have settled in to their first week and we thank you for supporting us during this transition back into school life.

As always, if you have any questions or concerns, please don't hesitate to speak to us.

Mrs Park, Miss Bolt & Miss Wiggin